



Armor Cup

From the 21th to the 23th of June 2019

The Regatta "Circuit Sailing Company" is reserved for the Employees of the Orange group

Organised by the Société Nautique de la Trinité-sur-mer

Préambule :

The regatta of of the **Orange Armor Cup Challenge is only for orange employees (CDI or CDD) or Retired from Orange** who have already participated at the Armor Cup.

SAILING INSTRUCTIONS

In Sailing Instruction (SI) [DP] means the penalty for breaking a rule can be less than a disqualification, at the discretion of the Jury.

1. RULES

The regatta will be governed by :

1.1	The rules as defined in The Racing Rules of Sailing, (RRS).
1.2	Regulations of the FFVoile.
1.3	From sunset to sunrise, the rules of part 2 of the RRS are replaced by part B, section II of the IRPCAS (International Regulations for Preventing Collisions at Sea). (Specified in Appendix).
1.4	The skipper and 3 team members must be part of the crew for the duration of the event. Each day, the crew will consist of a constant number of members, between 6 and 8. The number of crew members on board must be constant for every day of the regatta. A crew that races on the first day with 6 members will have to do all the races with 6 members.
1.5	The Grand-surprise class rules, except for rule I. 5.2. https://www.grandsurprise.com/jauge/ Rule II. 6.15 front deck cover has been modified: the front deck covers must not be used to send or recover the spinnaker.
1.6	If there is a conflict between languages, the French text will take precedence.

2. NOTICES TO COMPETITORS




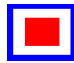

Notices to competitors will be posted on the official notice board located at the marquee Armor Cup.

3. CHANGES TO SAILING INSTRUCTIONS

Any change to the SI will be posted on the official notice board no later than 2 hours before the warning signal of the first race of the course concerned by the change(s), except for any change to the schedule of races that will be posted by 20h00 the day before it will take place.



4. SIGNALS

4.1	Signals made ashore will be displayed on the flagpole close to the SNT on which an SNT club flag is also displayed. These signals will be announced by VHF or /and at the briefings.	
4.2	When flag AP is displayed ashore, the warning signal will be made not less than one hour after lowering of Flag AP. (This changes Race Signals).	
4.3	Shortening and changing the coastal course : Flag O displayed near a mark to be rounded means : after having passed this mark , sail directly to the finishing line and respect SI 10 if necessary (Areas that are obstructions). Short and repetitive sound signals will be made by the committee boat near the mark to alert competitors.	
4.4	Sail Modification : When the flag W is sent at the Committee boat, the use of the SPI is FORBIDDEN.	
4.5	Change the next leg: Sending the pavilion C means that the position of the next mark has been changed (new heading).	

5. RACE SCHEDULE

5.1 Races are scheduled as follows:

- **Wednesday 19th June**
 - To 18 :00 from 20:00: Availability of boats with inventory
- **Thursday 20th June**
 - To 09 :00 from 11 :00: Availability of boats with inventory
 - To 16:00 à 18 :45 : Registration confirmation for the whole crews at the armor Cup marquee
- **Friday 21th June**
 - 08:00 : Skipper's briefing at the marquee Armor Cup
 - 10:00 : 1st warning signal (One race or more)
- **Saturday 22th juin**
 - 08:00 : Skipper's briefing at the marquee Armor Cup
 - 10:00 : 1st warning signal (One race or more)
- **Sunday 23th june**
 - 08:30 : Skipper's briefing in the marquee Armor Cup
 - 10:30 : 1st warning signal (One race or more)
 - 13:00 : Return to port and inventory of boats
 - 15:00 : Prize giving under the marquee 'Armor Cup

5.2 To alert boats that a race or sequence of races will begin soon, the orange starting line flag will be displayed by the Committee Boat with one sound at least five minutes before a warning signal is made.



5.3 On the last scheduled day of racing no warning signal will be made after 12h00.

6. CLASS FLAGS

The class flag will be Armor Cup flag.

7. RACING AREAS

The starting line at La Trinité sur Mer is located in Quiberon Bay, close to the following position : 47°32,111 N-03°01,038 W, map SHOM 7033.
For any other start outside La Trinité-sur-mer, the area is indicated in Appendix Coastal race.

8. COURSES

8.1 Coastal course (Appendix Coastal race)

No later than the warning signal, the race committee will signal the coastal course to be sailed, displaying on the race committee boat the course number according to appendix.

8.2 The dispatch of the " D : Delta" flag on the committee boat means that there is an offset mark.

The absence of the "D" flag means that there is no offset mark.

The Green flag hoisted under the "D" flag means that the offset mark is to be rounded and leave STARBOARD side. This changes the race signals. The absence of a green flag means that the offset mark is to be rounded and leave on the PORT side. This changes the race signals.



8.3 Technical courses : (appendix Technical course)

Flag "Quebec: Q " will be displayed on the boat Committee.

Track will be : Start, 1, 2, 3, 1, 2, 3, Finish (to leeward). The mark 3 is a gate made by two buoys.



9. MARKS

<i>Marks</i>	<i>Buoy colors</i>
<i>1, 2, 3 and offset mark</i>	<i>Orange SNT</i>
<i>Start</i>	<i>Yellow SNT</i>
<i>Finish</i>	<i>Small white conical</i>

- The marks 1, 2 are to be left to port. The mark 3 is a gate.
- The finish line for coastal tracks is defined for each race in the appendix coastal course.
- A boat from the race committee indicating a change of the course leg is a mark.

10. AREAS WHICH ARE OBSTRUCTIONS

10.1 The channel of La Trinité-sur-Mer harbour MUST be respected at all time.


10.2 Competitors are reminded that there is a risk of danger close to some marks: on all coastal courses, whether shortened or not, and on windward-leeward course/La Trinité Harbour, **the South Cardinal Buoy of the Buissons de Méaban** and the **West Cardinal Roche Révision** MUST be respected.

10.3 Prohibited sailing area: The “Mussel farming area” , near the rock of “la Vieille” in front of Hoat island marked by 4 buoys, with the following co-ordinates, is a prohibited sailing area:

- North Cardinal Buoy: 47°25.194N ; 2°56.356W
- East Cardinal Buoy: 47°25,086N ; 2°56,046W
- Special Buoy: 47°24,531N ; 2°56,513W
- Special Buoy: 47°24,640N ; 2°56,819W

11. THE START :

11.1 Races will be started by using RRS 26 with the warning signal 5 minutes before the starting signal.

Signal	Flag and Sound	Minutes before starting
Warning	Flag Armor Cup	5
Preparatory	Flag P, I, Z, Z&I, U or Noir One sound signal 	4
One minute	Lowering of the Preparatory signal One long sound signal	1
Start	Lowering of the Armor Cup Flag	0

11.2 The starting line will be between a staff displaying an orange flag on the race committee boat at the starboard end and the course side of the port-end starting mark.



11.3 A boat that does not start within 4 minutes after her starting signal will be scored DNS (this changes RRS A4 and A5).

12. CHANGE OF THE NEXT LEG OF THE COURSE

12.1 To change the next leg of the course, the race committee will lay a new mark (or move the finishing line) and remove the original mark as soon as practicable.

12.2 The boats must pass between race committee vessel signaling the change of the next leg and the nearby mark, leaving it on the required side (this modifies RRS 28).

13. FINISH

13.1 The finishing line will be between a staff displaying an orange flag and the course side of the finishing mark.



13.2 If the race committee is absent when a boat finishes, the finishing boat should report of her finishing time, and her position in relation to nearby boats, to the race committee at the first reasonable opportunity.

13.3 **Finish of Coastal races:**

- **La Trinité-sur-mer :**

The finish line is defined by the passage between the white inflatable buoy to be left on starboard side and the race committee boat to be left on portside.

- **Houat :**

Finish line between an inflatable buoy dropped by 47 ° 24 ' N – 002 ° 55 ' W to be left on starboard side and the mast bearing the orange flag of the boat committee to be left on port side.

- **Hoëdic :**

Finish line between an inflatable buoy dropped near the isolated danger mark “La Chèvre” to be left on starboard side and the mast bearing the orange flag of the boat committee to be left on portside.

14. PENALTY SYSTEM

14.1 RRS 44.1 is changed so that the Two-turn Penalty is replaced by the One-turn Penalty.

14.2 When the rules of part 2 of the RRS are replaced by the Part B - Section II of the IRPCAS, RRS 44.1 does not apply.

14.3 A breach of a rule (except RRS of chapter 2) may, after a hearing, be penalized with a penalty less than DSQ.

15. TIME LIMITS

The finishing line will be closed:

- Technical Course: 30 minutes after arrival of the 1st boat.
- Coastal course: 3 minutes per mile after arrival of the 1st boat.

16. PROTESTS AND REQUESTS FOR REDRESS

16.1 Protest forms are available at the jury secretariat in the marquee Armor Cup. Protests and requests for redress or reopening shall be delivered there within the protest time limit.

16.2 For each class, the protest time limit is 60 minutes after the last boat has finished the last race of the day or the race committee signals no more racing today, whichever is the latest.

16.3 Notices will be posted no later than 30 minutes after the protest time limit to inform competitors of hearings in which they are parties or named as witnesses. Hearings will be held in the jury rooms, under the tent Armor Cup, beginning at the time mentioned on official notice

16.4 Notices of protests by the race committee, technical committee or jury will be posted to inform boats under RRS 61.1(b).

16.5 Breaches of instructions below will not be grounds for a protest by a boat. This changes RRS 60.1(a):

- Start: boats waiting for their start ;
- Safety rules (except bowsprit rule) ;
- Advertising ;
- Support boats ;
- diving equipment and plastic pools ;
- Radio communication ;
- Haul-out restrictions

16.6 On the last scheduled day of the regatta, a request for reopening a hearing shall be delivered

(a) Within the protest time limit if the requesting party was informed of the decision on the previous day

(b) No later than 30 minutes after the decision has been posted.
This changes RRS 62.2.

17. SCORING

- 17.1** One race is required to be completed to constitute a series.
Three races are required to be completed for the selection of the "Championnat de France Voile Entreprise Habitable".
- 17.2** When less than 4 races have been completed, a boat's series score will be the total of her race scores.
When from 4 to 7 races have been completed, a boat's series score will be the total of her race scores excluding her worst score.
When 8 or more races have been completed, a boat's series score will be the total of her race scores excluding her two worst scores.

18. SAFETY REGULATIONS

18.1 [DP] A Registration

A Registration Check will take place before the start of her first race in the marquee Armor Cup

- **Check-out** is open until 60 minutes before the warning signal of the 1st race of the day. Any boat not satisfying this rule will be penalized by 10% of the registrants, without instruction on the 1st race of the day.
- **Check-in** : is open until the limit time of filing of claims. Any boat not satisfying this rule will be penalized by 10% of registrants, without instruction on the last race of the day.

18.2 [DP] A boat that retires from a race shall notify the race committee as soon as possible.

18.3 The VHF Channel is **72**.

18.4 Satellite positioning

A positioning system will be given to each competitor. Everything must be done to facilitate the setting up of the beacons before the race and their maintenance in perfect working condition during the event. It must be fixed in the aft-starboard balcony.

19. REPLACEMENT OF CREW OR EQUIPMENT [DP]

19.1 A daily crew list should be given to the registration check.

- 19.1** Substitution of damaged or lost equipment will not be allowed unless authorized by the technical committee or race committee. Requests for substitution shall be made to the committee at the first reasonable opportunity. (No equipment replacement will be provided on the water)

20. EQUIPMENT AND MEASUREMENT CHECKS

- 20.1** A boat or equipment may be inspected at any time for compliance with the class rules and SI. On the water, a boat can be instructed by a member of the technical committee to proceed immediately to a designated area for inspection.
- 20.2** A boat must comply with the rules at least 75 minutes before her 1st warning signal of the day. [DP]

21. ADVERTISING [DP]

The boats must carry the advertisement, and the stickers provided by the Organizing Authority

22. OFFICIAL BOATS



- 22.1** Official boats will be marked SNT.
- 22.2** Boats shall display the flag defined (SI 22.1) as obstacles.

23. SUPPORT BOATS [DP]

- 23.1** Support persons shall remain outside areas where boats are racing from the time of the preparatory signal for the first class to start until all boats have finished or the race committee signals a postponement, general recall or abandonment.
- 23.2** The FFVoile regulation governing the intervention of support persons will apply.

24. HAUL-OUT RESTRICTIONS [DP]

Boats shall not be hauled out during the regatta, except with and according to the terms of prior written permission of the race committee.

25. DIVING EQUIPMENT AND PLASTIC POOL [DP]

Their use will be submitted to local regulations (harbour area, etc.).

26. RADIO COMMUNICATIONS [DP]

Except in an emergency, a boat that is racing shall not make voice or data transmissions and shall not receive voice or data communications that is not available to all boats.

27. DECISION TO RACE

It is the sole responsibility for a boat to participate in a race or to continue racing. Consequently, by accepting to participate in a race or to continue racing, the competitor discharges the organizing authority from any liability for damage (material and/or personal injury).

28. TIDE TIMES – SUNRISE AND SUNSET TIMES

Port-Navalo (56) French legal time

Dates	HW	coef	LW
Friday 21th june	08h05 20h26	70 66	02h21 14h37
Saturday 22th june	08h40 21h06	62 59	03h00 15h18
Sunday 23th june	09h20 21h52	55 51	03h41 16h01

Race Officials .

- Committee Chairman : Gilles BRICOUT
- Jury Chairman : Claude PETIT
- and the SNT volunteers

29. APPENDIX

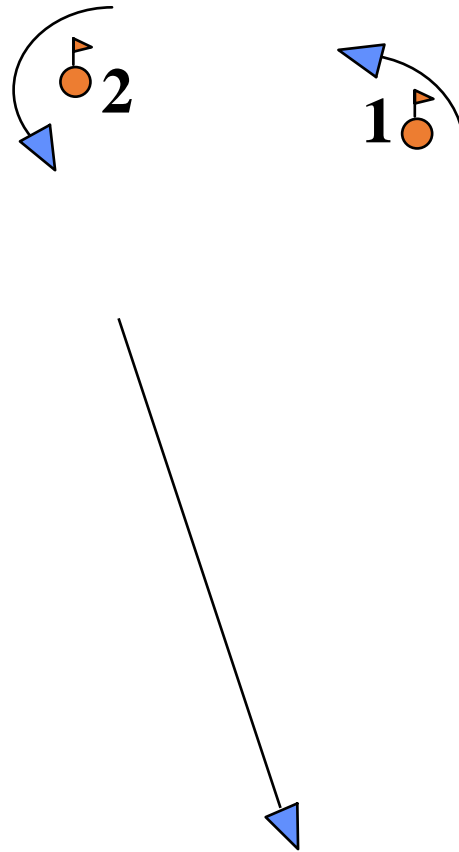
1. Appendix Technical Courses
2. Appendix Coastal Race
3. Appendix Position of the finish line of the coastal Race

APPENDIX 1 – Racing Areas

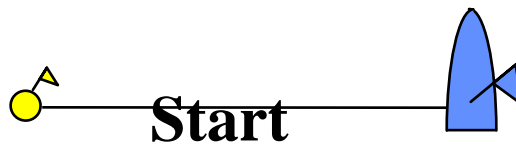


Appendix – Technical Course
(Flag « Québec »)
The mark 1, 2 are to be left on port.
The mark 3 is a gate

Vent



Course
2 Turns
Start, 1, 2, 3, 1, 2, 3,
Finish. (Mark 3 is a
gate)



Appendix 2 – Coastal Course for Armor Cup 2019

Coastal Race Baie de Quiberon

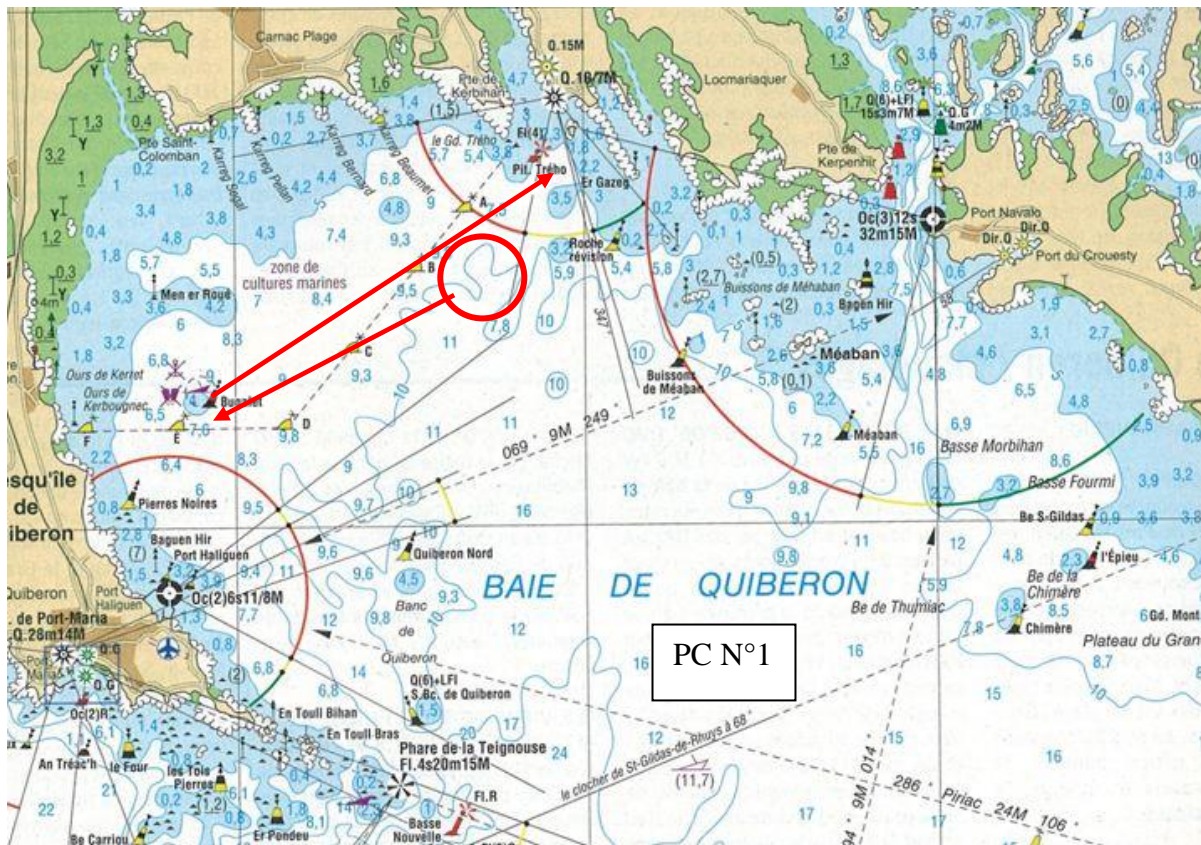
Coastal Race N°1 (6NM)

Starting line

Offset Mark if flag “D” on the boat committee

Buoy danger isolée Bugalet to be rounded on starboard

Finish line is defined by the passage between the white inflatable buoy to be left to starboard and the race committee boat to leave to port. (appendix - Position of the finish of coastal courses)



Coastal Race N°2 (8.6NM)

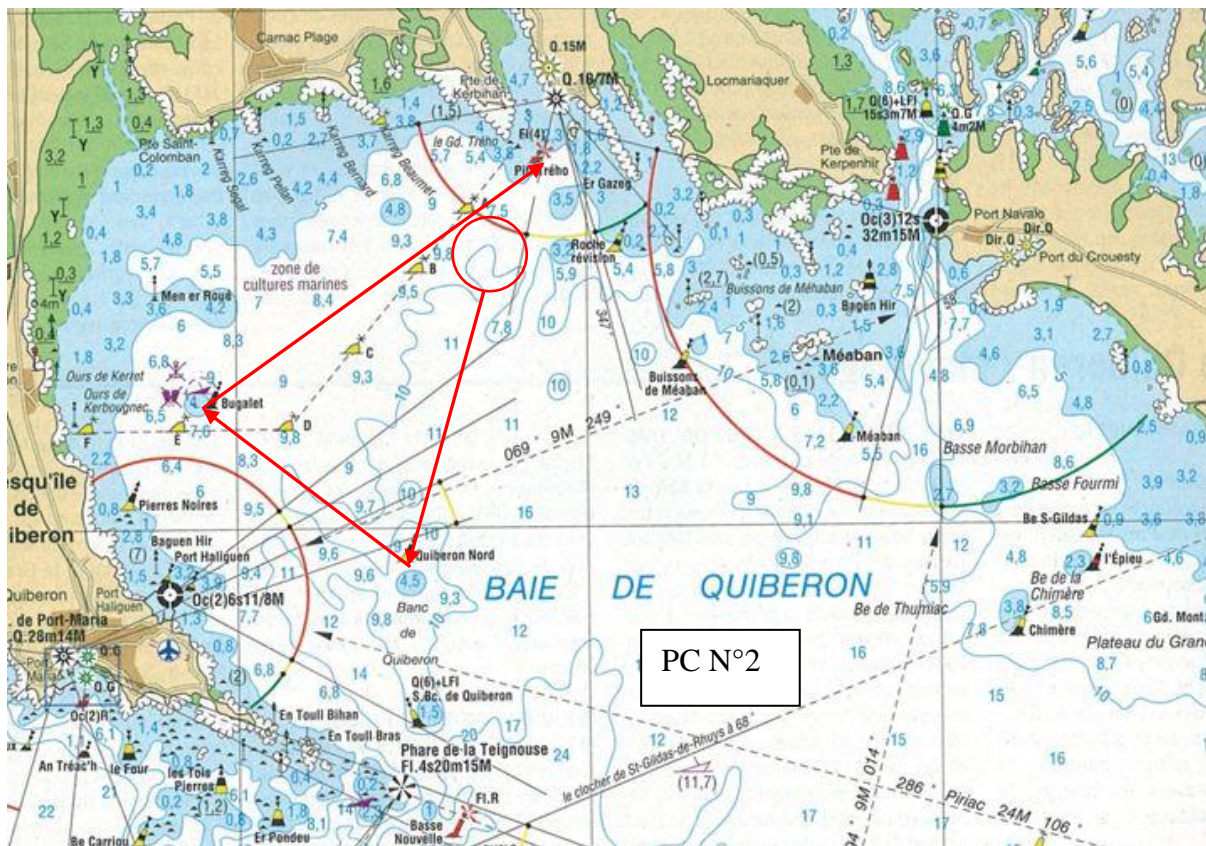
Starting line

Offset Mark if flag "D" on the boat committee

Buoys Cardinale Nord du Banc de Quiberon to be rounded on starboard

Buoy danger isolée Bugalet to be rounded on starboard

Finish line is defined by the passage between the white inflatable buoy to be left on starboard and the race committee boat to be left on portside. (appendix - Position of the finish of coastal courses)



Coastal Race N°3 (13NM)

Starting line

Offset Mark if flag “D” on the boat committee

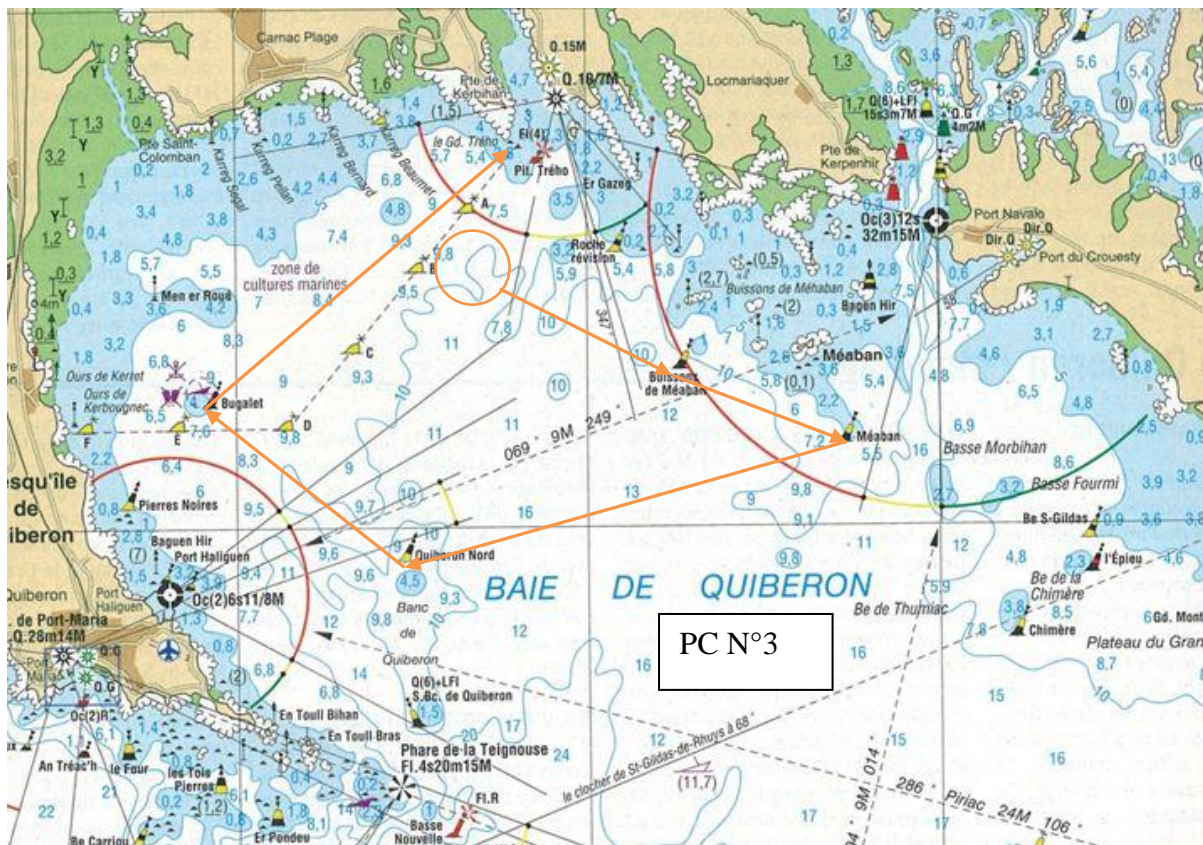
Buoy Cardinale Sud des Buissons de Méaban to be left on port

Buoy cardinale Sud “Méaban” to be rounded on starboard

Buoy cardinale Nord du Banc de Quiberon to rounded on starboard

Buoy danger isolé “Bugalet” To be rounded on starboard

Finish line is defined by the passage between the white inflatable buoy to be left on starboard and the race committee boat to be left on portside. (appendix - Position of the finish of coastal courses)



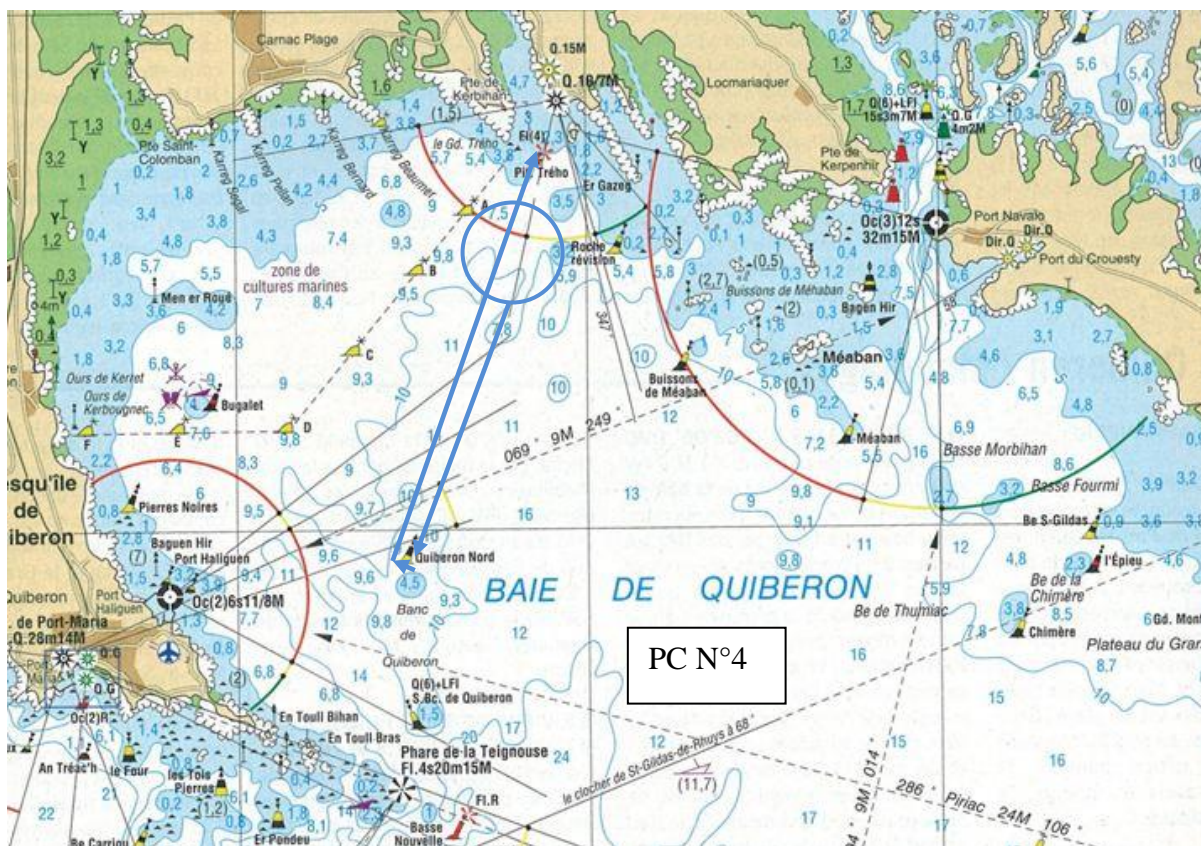
Coastal Race N°4 (8NM)

Start Line

Offset Mark if flag "D" on the boat committee

Buoy cardinale Nord du Banc de Quiberon to rounded on starboard

Finish line is defined by the passage between the white inflatable buoy to be left on starboard and the race committee boat to be left on portside. (appendix - Position of the finish of coastal courses)



Coastal Race N°5 (12.7NM)

Start Line

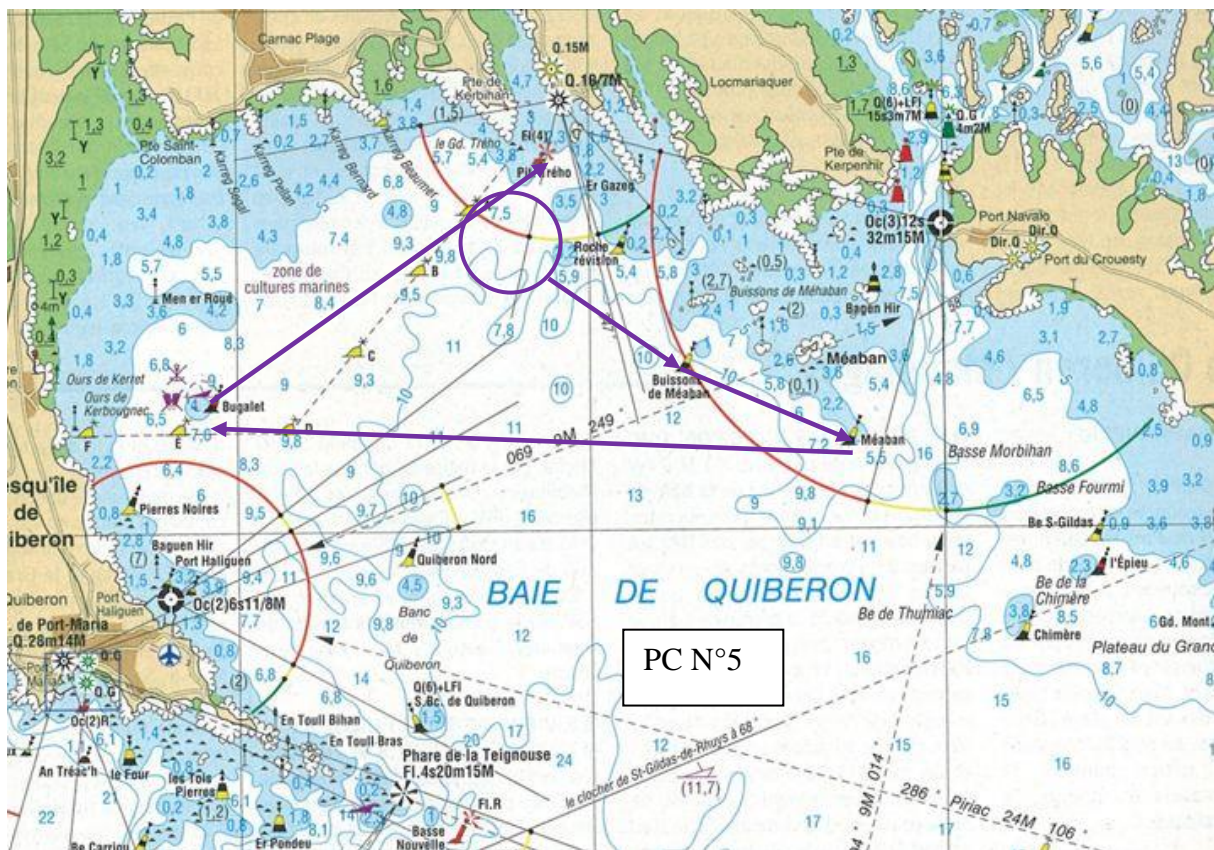
Offset Mark if flag "D" on the boat committee

Buoy cardinale Sud des Buissons de Méaban to left on port

Buoy cardinale Sud Méaban to rounded on starbord

Buoy danger isolée Bugalet to rounded on starbord

Finish line is defined by the passage between the white inflatable buoy to be left on starboard and the race committee boat to be left on portside. (appendix - Position of the finish of coastal courses)



Coastal Race N°6 (12.7NM)

Start Line

Offset Mark if flag "D" on the boat committee

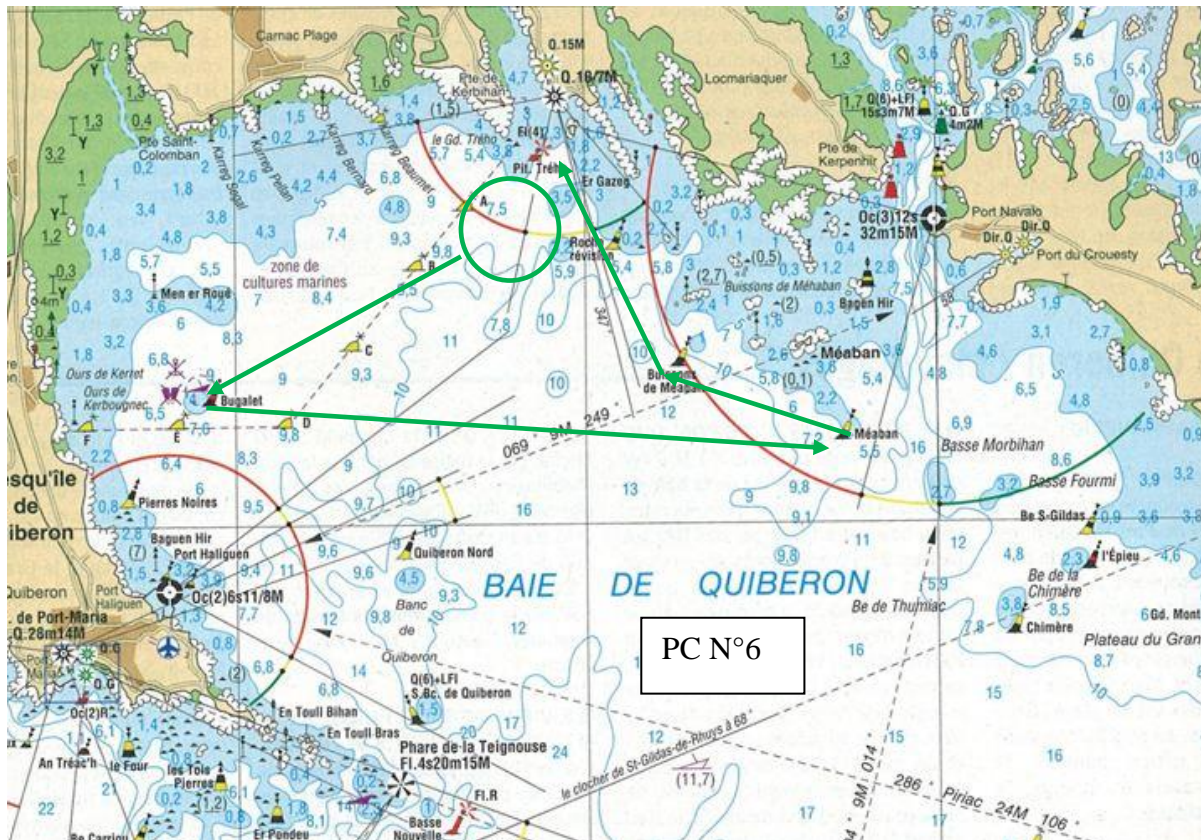
Buoy de danger isolée Bugalet to rounded on port

Buoy cardinale Sud Méaban to rounded on port

Buoy cardinale Sud des buissons de Méaban to be left on starboard

Buoy cardinale ouest Roche révision to be left on starboard

Finish line is defined by the passage between the white inflatable buoy to be left on starboard and the race committee boat to be left on portside. (appendix - Position of the finish of coastal courses)



Coastal race N°7 (11NM)

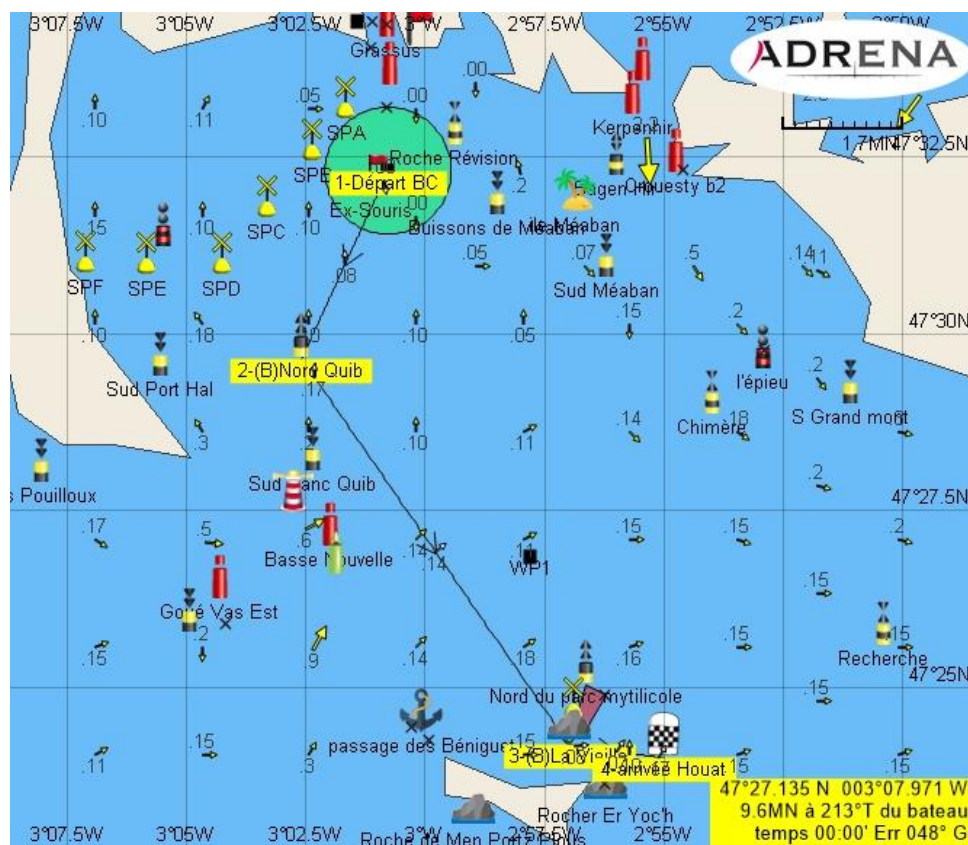
Start Line

Offset Mark if flag "D" on the boat committee

Buoy cardinale Nord Quiberon to rounded on port

Rocher de la vieille to be rounded on port

Finish line between an inflatable buoy wetted by $47^{\circ} 24' N - 002^{\circ} 55' W$ and the mast displaying the orange flag of the Boat Committee



Coastal Race N°8 (11NM)

Start Line

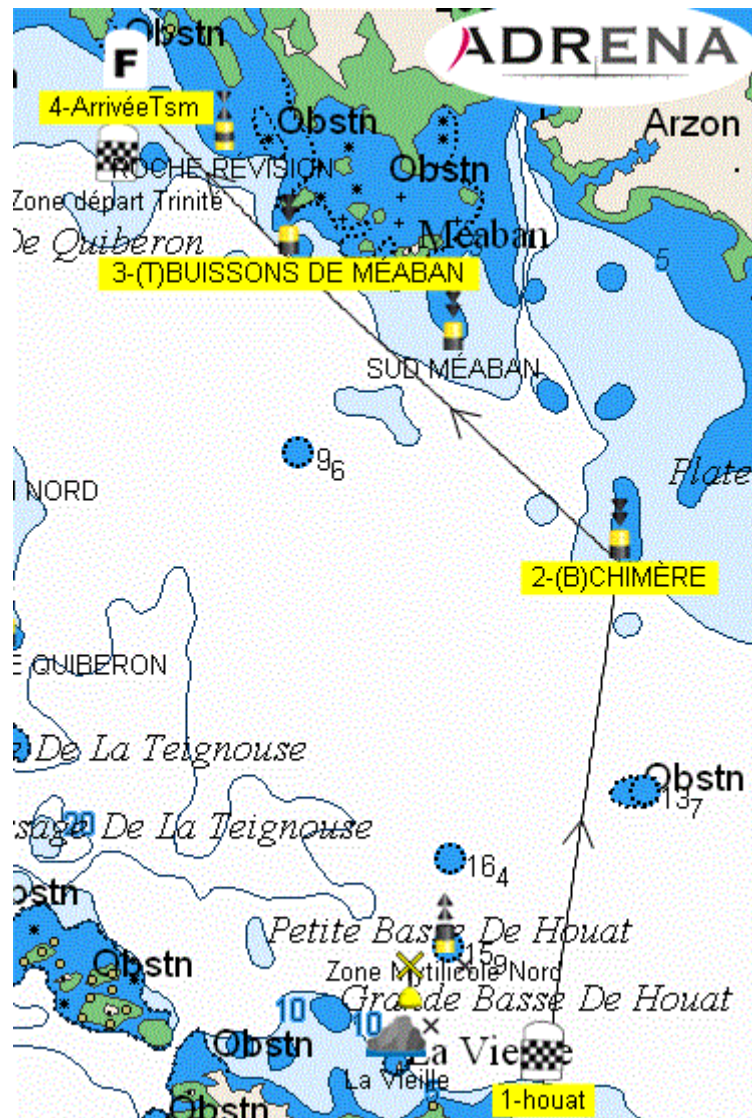
Offset Mark if flag "D" on the boat committee

Buoy cardinale Sud chimère to rounded on port

Buoy cardinale Sud des buissons de Méaban to be left on starboard

Buoy cardinale ouest Roche révision to be left on starboard

Finish line is defined by the passage between the white inflatable buoy to be left on starboard and the race committee boat to be left on portside. (appendix - Position of the finish of coastal courses)



Coastal races N°9 (12NM)

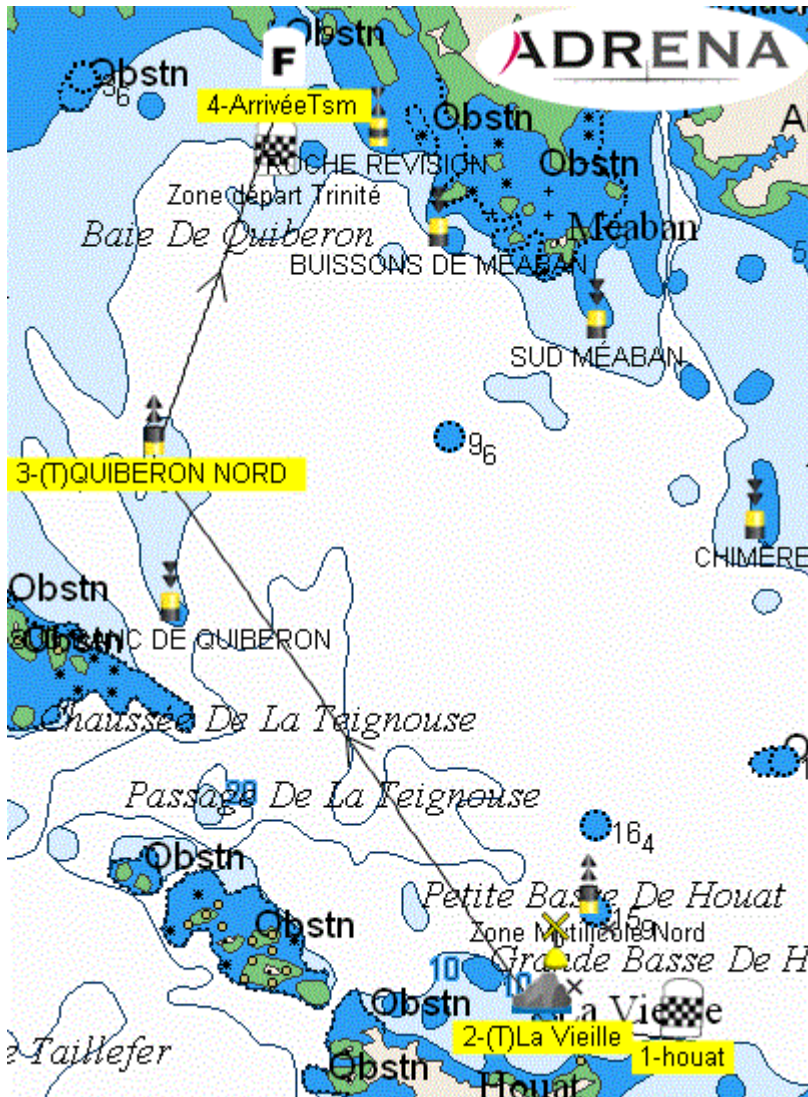
Start Line

Offset Mark if flag "D" on the boat committee

Rocher de la vieille à contourner to rounded on starboard

Buoy cardinale Nord de Nord Quiberon to rounded on starboard

Finish line is defined by the passage between the white inflatable buoy to be left to starboard and the race committee boat to be left on portside. (appendix - Position of the finish of coastal courses)



Coastal race N°10 (12NM)

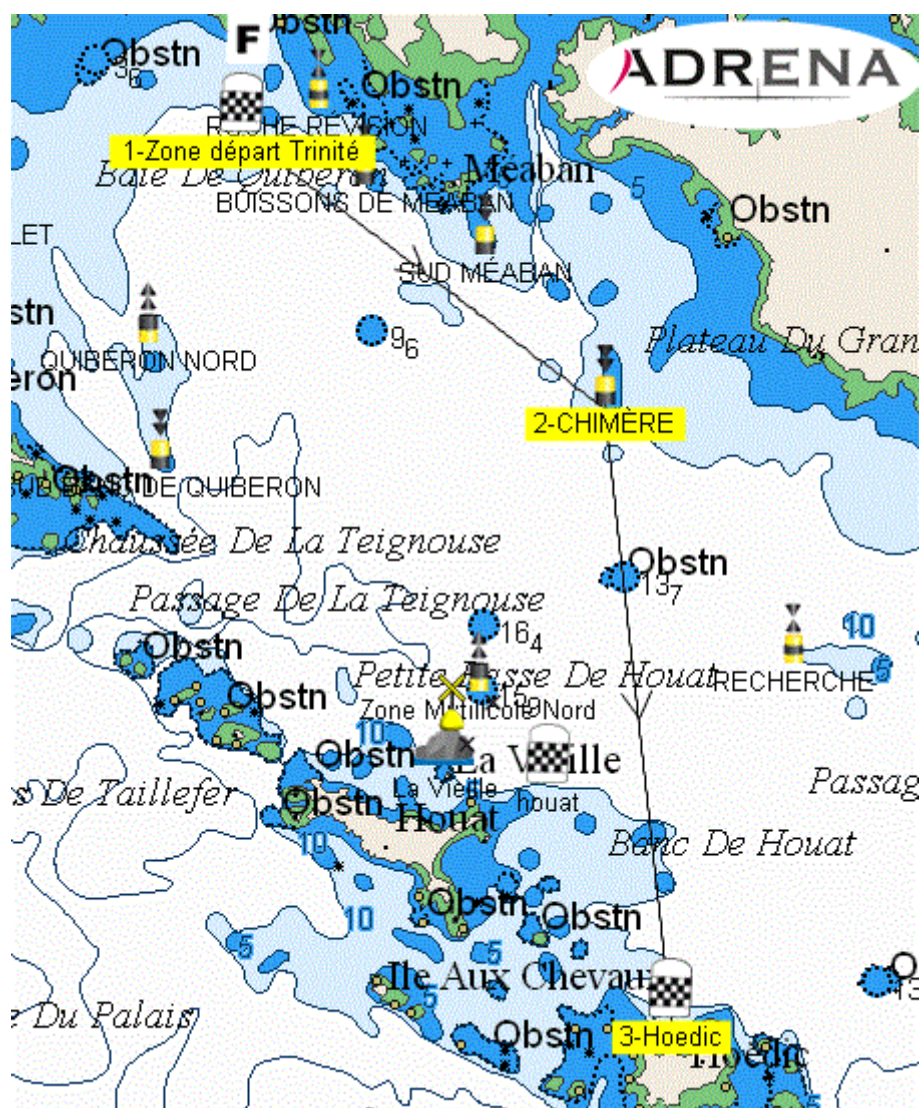
Start Line

Offset Mark if flag “D” on the boat committee

Buoy Cardinale Sud des Buissons to rounded on port

Buoy cardinale Sud Chimère to rounded on starboard

Finish line between an inflatable buoy close to the isolated danger mark of “la Chèvre” and the mast bearing the orange flag of the boat Committee.



Parcours N°11 (environ : 15mn)

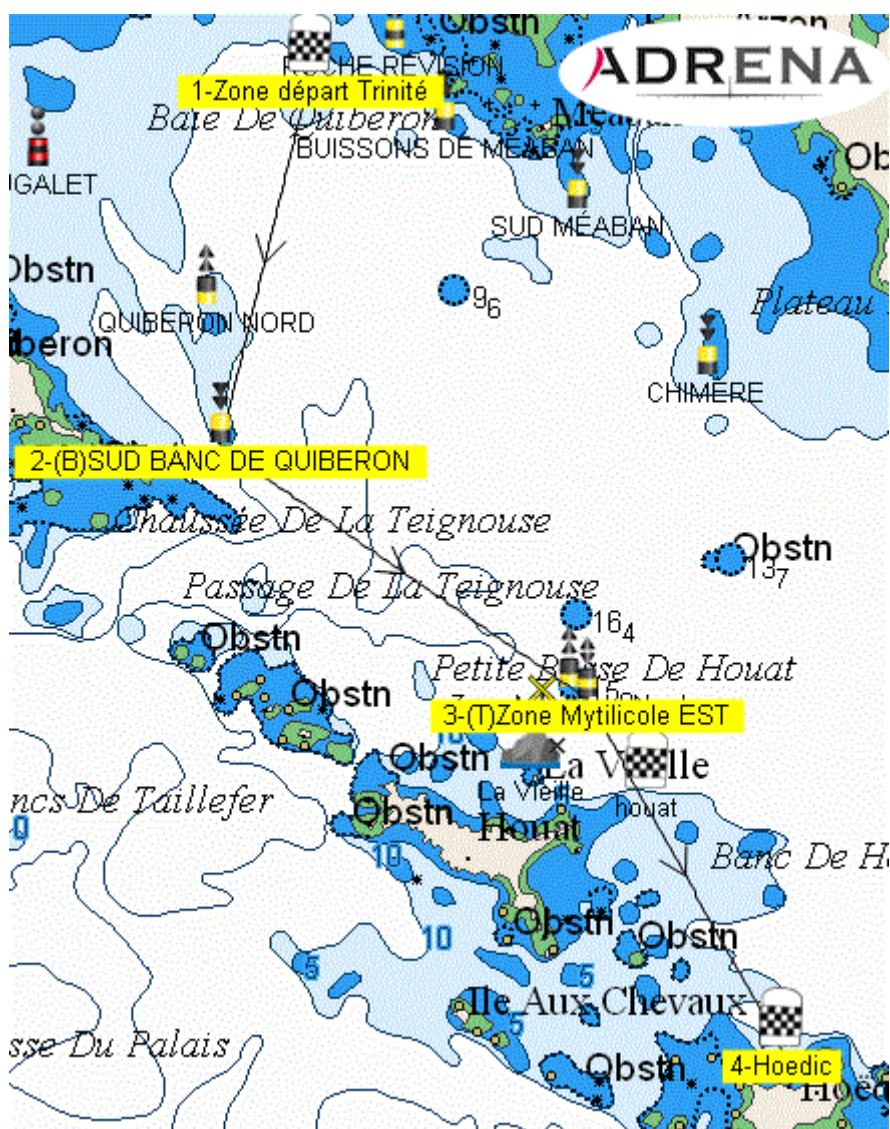
Start Line

Offset Mark if flag "D" on the boat committee

Buoy cardinale Sud du Banc de Quiberon to rounded on port

"Mussel farm" in front of Houât to rounded on startboard

Finish line between an inflatable buoy close to the isolated danger mark of "La Chèvre" goat and the mast bearing the orange flag of the boat Committee.



Parcours N°12 (environ : 15mn)

Start Line

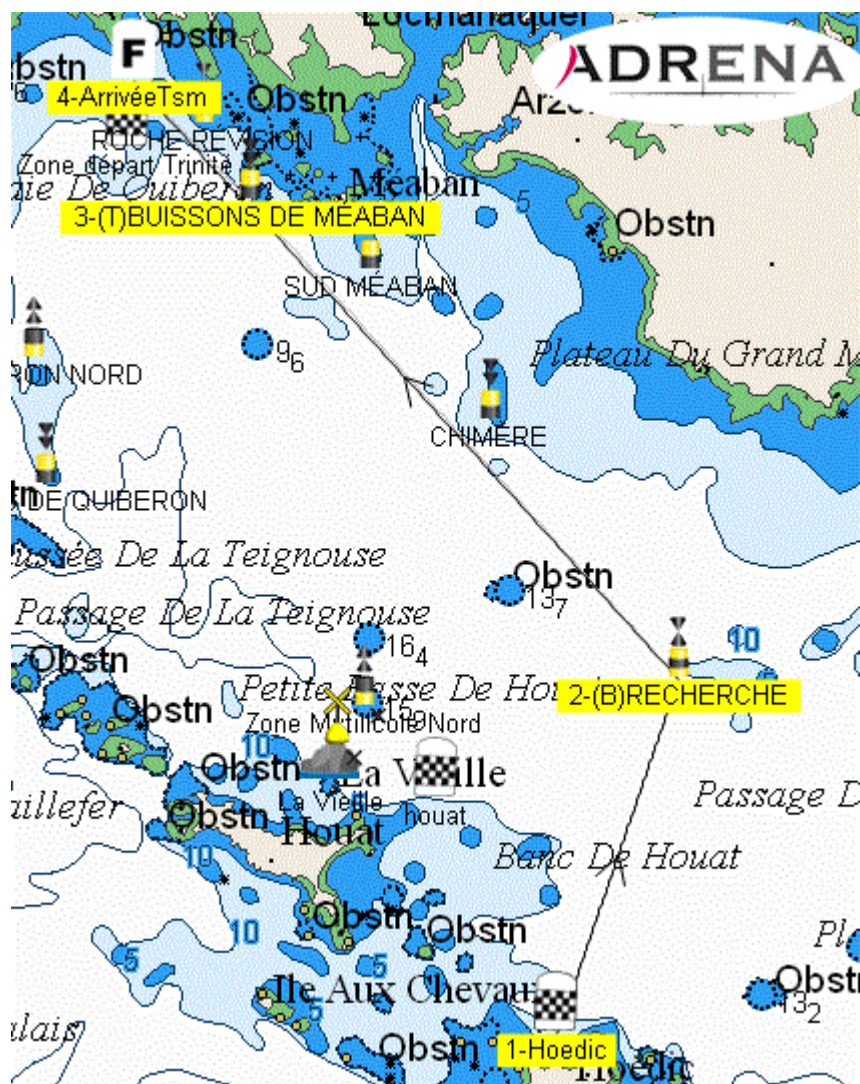
Offset Mark if flag "D" on the boat committee

Buoy cardinale Ouest la Recherche to rounded on port

Buoy cardinale Sud des buissons de Méaban to be left on starboard

Buoy cardinale ouest Roche révision to be left on starboard

Finish line is defined by the passage between the white inflatable buoy to be left on starboard and the race committee boat to be left on portside. (appendix - Position of the finish of coastal courses)



Parcours N°13 (environ : 17mn)

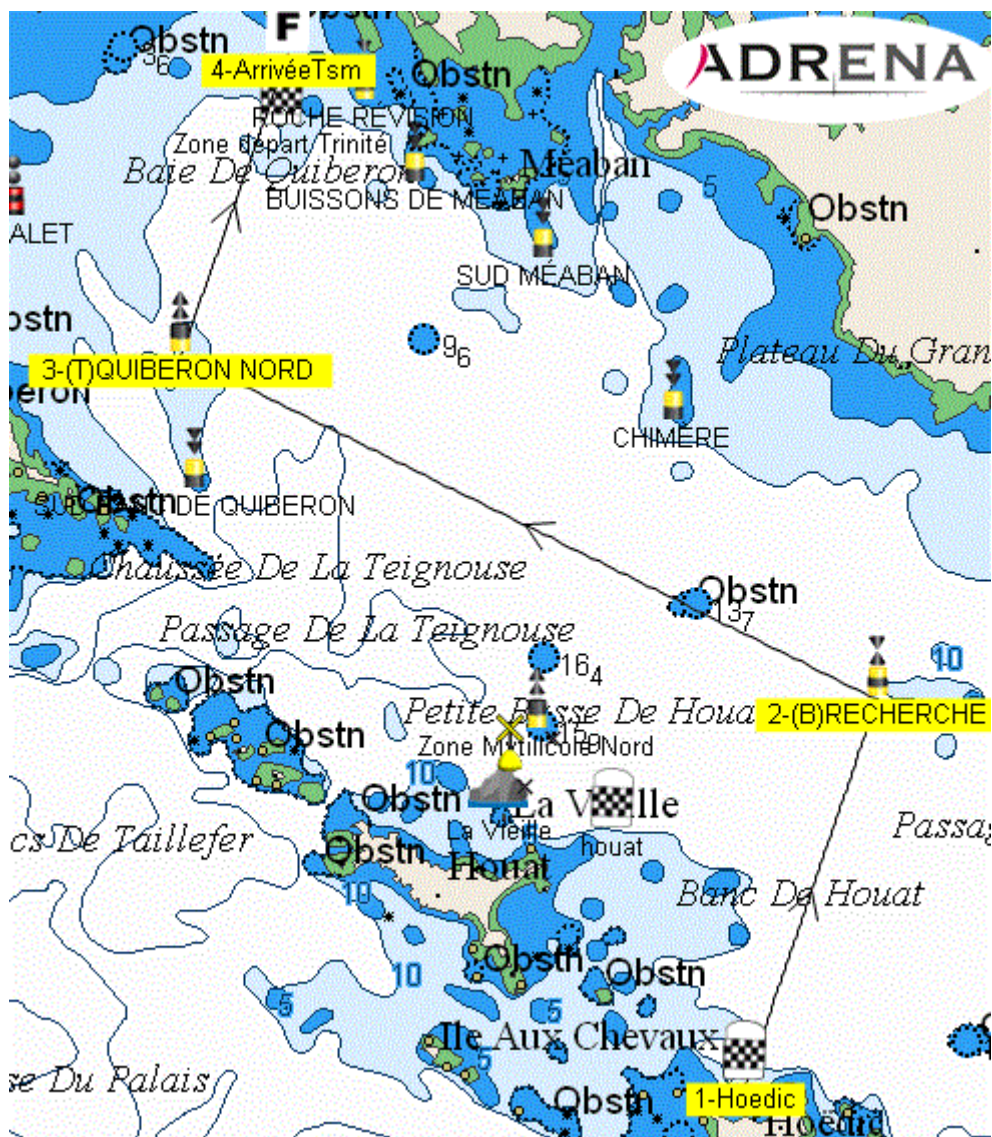
Start Line

Offset Mark if flag "D" on the boat committee

Buoy cardinale Ouest "Recherche" To be rounded on port

Buoy cardinale Nord de Quiberon Nord to be rounded on starboard

Finish line is defined by the passage between the white inflatable buoy to be left on starboard and the race committee boat to be left on portside. (appendix - Position of the finish of coastal courses)



GPS points used for coastal courses

Buoy	Finish Trinité sur Mer	47°33.200 N	003°00.700 W	Finish coatal course côtiers
Danger Isolé	Bugalet	47°31.252 N	003°05.486 W	
Cardinale Sud	Buisson de Méaban	47°31.654 N	002°58.490 W	To rounded IC 10
Cardinale Sud	Chimère	47°28.834 N	002°53.968 W	
Buoy	Hoëdic	47°21.000 N	002°52.700 W	Finish – Start
Buoy	Houât	47°24.000 N	002°55.000 W	Finish - Start
Rocher	La Vieille	47°24.193 N	002°57.000 W	
Cardinale nord	Quiberon Nord	47°29.640 N	003°02.577 W	
Cardinale Ouest	Recherche	47°25.555 N	002°50.399 W	
Cardinale Ouest	Roche Révision	47°32.625 N	002°59.362 W	To rounded IC 10
Cardinale Sud	Sud Banc de Quiberon	47°28.026 N	003°02.353 W	
Cardinale Sud	Sud Méaban	47°30.765 N	002°56.235 W	
Area	Area Start Trinité	47°32.330 N	003°00.810 W	Area start la Trinité
Zone Interdite à la navigation	Zone Mytilicole-La Houataise 01.0	47°24.640 N	002°56.819 W	Mytilicole zone in front of Houât forbidden to navigation IC 10
	Zone Mytilicole-La Houataise 04.0	47°24.531 N	002°56.513 W	
	Zone Mytilicole EST	47°25.086 N	002°56.046 W	
	Zone Mytilicole Nord	47°25.194 N	002°56.356 W	

Appendix 3 - Position of the finish line of coastal course



The position of the finish buoy is fixed position: 47 ° 33.200 N – 03 ° 00.700 W. The finish line is defined by the passage between the white inflatable buoy to be left on starboard and the Boat Race committee to be left on portside.